




- Ground Floor Flat
- 1 Bedroom
- Gas Central Heating & Double Glazed
- Re-decorated & Re- Carpeted
- New Fitted Modern Bathroom
- Patio area
- Communal Gardens
- Allocated Parking
- Favoured Polegate Location
- Close to Mainline Railway Station



£925 PCM

 1 BEDROOM

 1 RECEPTION

 1 BATHROOM

 GARAGE

Hawthorn Court, Polegate

Hawthorn Court, Polegate

DESCRIPTION

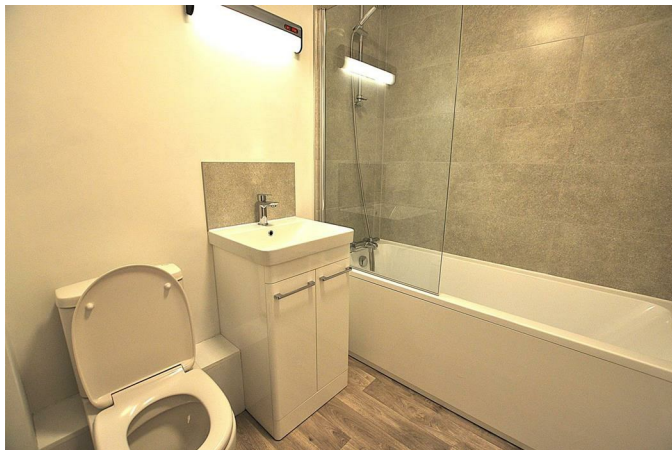
Welcome to Hawthorn Court, located on Black Path in the charming town of Polegate. This delightful one-bedroom flat offers a perfect blend of comfort and convenience, making it an ideal choice for individuals or couples seeking a cosy home.

Upon entering, you will be greeted by a newly decorated interior that exudes a fresh and inviting atmosphere. The flat has been thoughtfully re-carpeted, ensuring a warm and comfortable living space. The reception room is a lovely area to relax or entertain guests, providing ample space for your furnishings.

The bedroom is well-proportioned, offering a peaceful retreat at the end of the day. The newly installed bathroom features modern fixtures and fittings, providing a stylish and functional space for your daily routines.

One of the standout features of this property is its proximity to the mainline railway station, making it an excellent choice for commuters. You will enjoy easy access to local amenities and transport links.

Additionally, the flat comes with parking for one vehicle, a valuable asset in this area. There are well kept communal gardens and your own patio area directly from the lounge. Whether you are looking to explore the beautiful surroundings or simply enjoy the comforts of home, Hawthorn Court is a wonderful opportunity not to be missed. We invite you to come and experience this charming flat for yourself. Call us on 01323 840666.





Hawthorn Court, Polegate

COMMUNAL ENTRANCE HALL

Entrance door fitted with security entryphone system to main hall, private door to the flat.

HALL

Radiator, linen cupboard, security entryphone handset.

LIVING ROOM 4.70m x 3.60m

French doors to garden

KITCHEN: 2.67m x 2.02m

BEDROOM 4.20m x 2.68m

Radiator, two windows.

BATHROOM

GARDEN PATIO AREA

paved patio leading onto communal lawned gardens.

ALLOCATED PARKING BAY

located to the rear of the property.



Hawthorn Court, Polegate

